

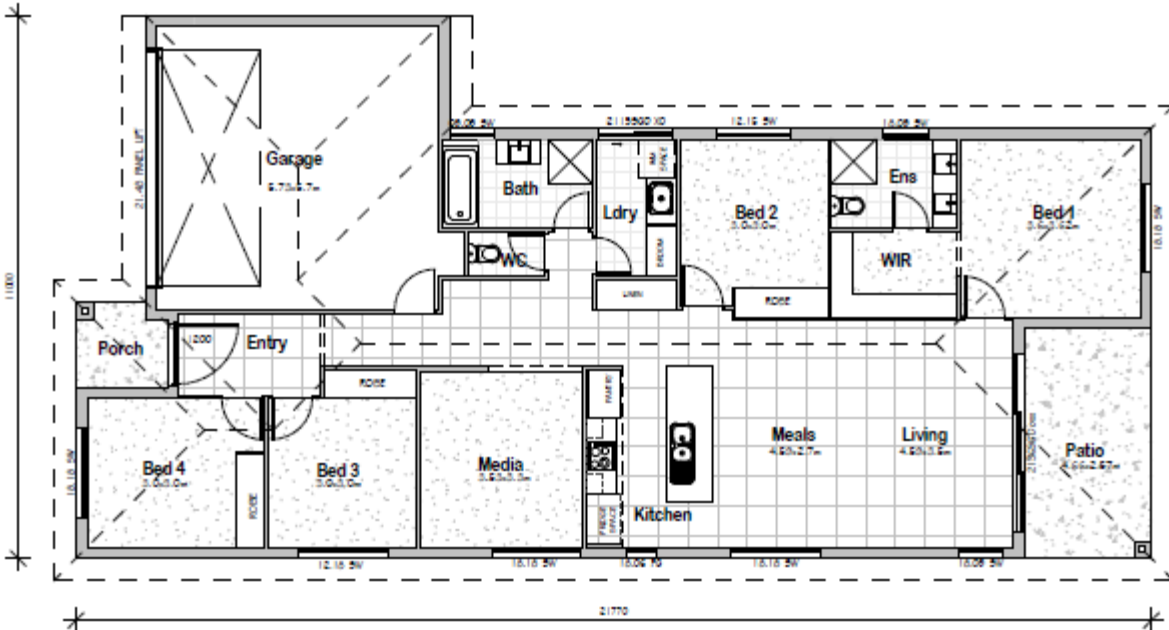
# Welcome home



QBCC: 1182308



**Lot 68 House & Land Package – 375m<sup>2</sup> block**



**NuTrend**  
QUALITY HOMES

FLOOR AREA CALCULATIONS

LIVING	147.96 m <sup>2</sup>
GARAGE	35.97 m <sup>2</sup>
PATIO	11.98 m <sup>2</sup>
PORCH	3.04 m <sup>2</sup>
<b>TOTAL</b>	<b>198.95 m<sup>2</sup></b>

## \$507,300

GST included

Complete move in House and land package with 'No Hidden Costs'. This *Package Won't Last Long.... Call Greg today....*

- Stone benchtops **throughout** your home
- Upgraded **2550mm** ceiling height
- Energy efficient LED downlights
- Carpet to all bedrooms, tiled floors to Living
- Ceiling fans to bedrooms and entertaining Patio
- **7kw** Split System Air-conditioning unit
- Remote controlled lock up garage
- European appliances with a 5yr warranty

- Luxury fittings and Vertical window blinds.
- Feature **1200mm Wide Timber entry door**
- Driveway, Letterbox & clothesline included

**CALL GREG TODAY**

Ph. 0404 477 751

E. [greg.farmer@ntqh.com.au](mailto:greg.farmer@ntqh.com.au)

