

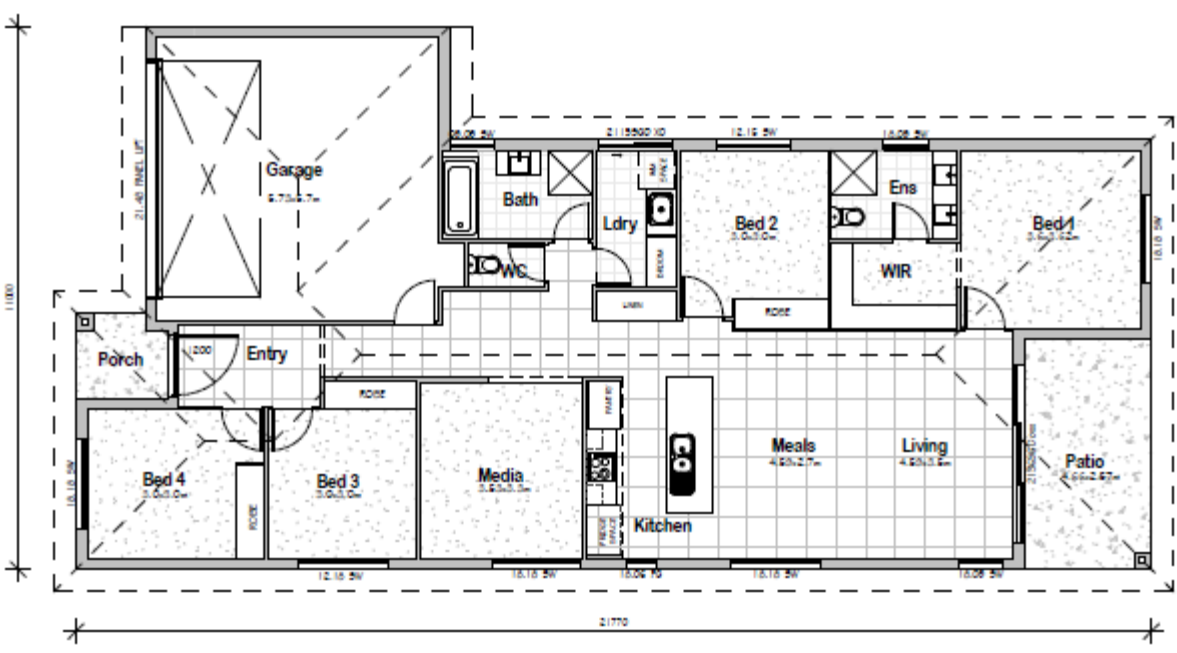
Welcome home



QBCC: 1182308



Lot 97 House & Land Package – 397m2 block



NuTrend
QUALITY HOMES

FLOOR AREA CALCULATIONS

LIVING	147.96 m ²
GARAGE	35.97 m ²
PATIO	11.98 m ²
PORCH	3.04 m ²
TOTAL	198.95 m²

\$521,250

GST included

Complete move in House and land package with 'No Hidden Costs'. This *Package Won't Last Long.... Call Greg today....*

- Stone benchtops **throughout** your home
- Upgraded **2550mm** ceiling height
- Energy efficient LED downlights
- Carpet to all bedrooms, tiled floors to Living
- Ceiling fans to bedrooms and entertaining Patio
- **7kw** Split System Air-conditioning unit
- Remote controlled lock up garage
- European appliances with a 5yr warranty

- Luxury fittings and Vertical window blinds.
- Feature **1200mm Wide Timber entry door**
- Driveway, Letterbox & clothesline included

CALL GREG TODAY

Ph. 0404 477 751

E. greg.farmer@ntqh.com.au

