

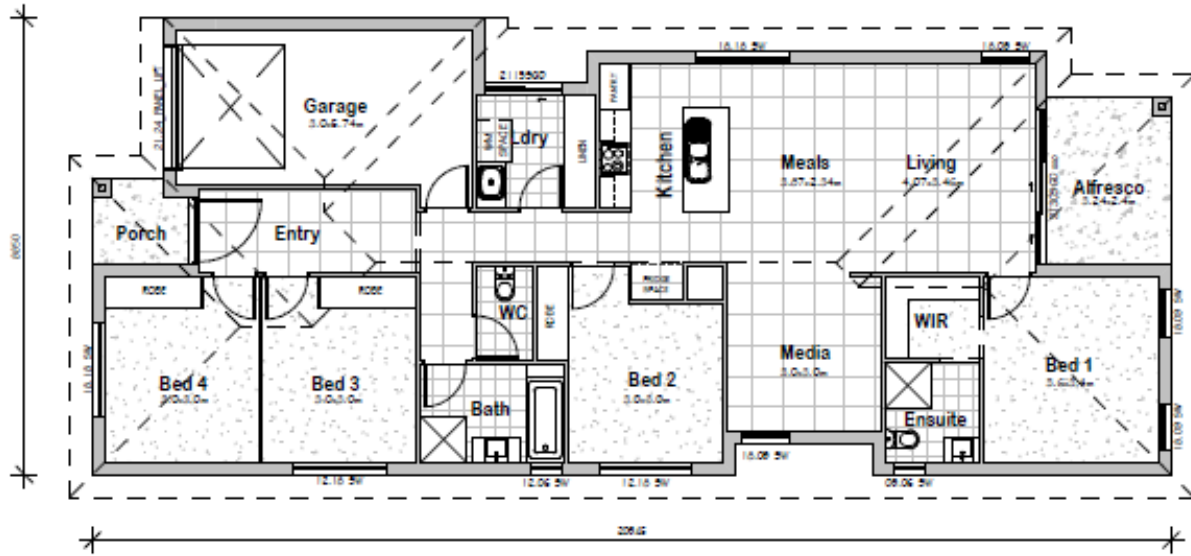
Welcome home



QBCC: 1182308

4
1
2

Lot 113 House & Land Package – 305m² block



NuTrend
QUALITY HOMES

FLOOR AREA CALCULATIONS

LIVING	136.49 m ²
GARAGE	20.12 m ²
ALFRESCO	7.79 m ²
PORCH	2.95 m ²
TOTAL	167.35 m²

\$463,190

GST included

Complete move in House and land package with 'No Hidden Costs'. This *Package Won't Last Long.... Call Greg today....*

- Stone benchtops **throughout** your home
- Upgraded **2550mm** ceiling height
- Energy efficient LED downlights
- Carpet to all bedrooms, tiled floors to Living
- Ceiling fans to bedrooms and entertaining Patio
- **7kw** Split System Air-conditioning unit
- Remote controlled lock up garage
- European appliances with a 5yr warranty

- Luxury fittings and Vertical window blinds.
- Feature **1200mm Wide Timber entry door**
- Driveway, Letterbox & clothesline included

CALL GREG TODAY

Ph. 0404 477 751

E. greg.farmer@ntqh.com.au

