

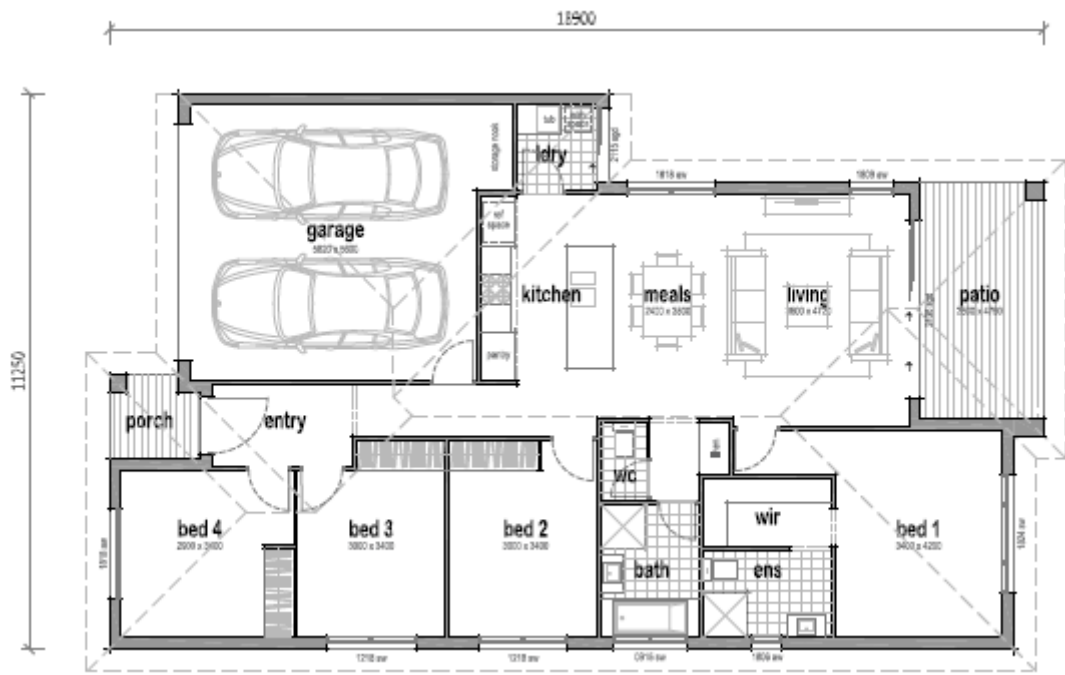
Welcome home



QBCC: 1182308

 **4**
 **2**
 **2**

Lot 70 House & Land Package – 375m2 block



NuTrend
QUALITY HOMES

Floor Area Calculations

Ground Floor:	134.26	sqm
Garage:	36.81	sqm
Porch:	2.95	sqm
Patio:	12.19	sqm
Total Floor Area:	186.21	sqm
Traditional Facade	20.0	squares

\$504,990
GST included

Complete move in House and land package with 'No Hidden Costs'. This *Package Won't Last Long.... Call Greg today....*

- Stone benchtops **throughout** your home
- Upgraded **2550mm** ceiling height
- Energy efficient LED downlights
- Carpet to all bedrooms, tiled floors to Living
- Ceiling fans to bedrooms and entertaining Patio
- **7kw** Split System Air-conditioning unit
- Remote controlled lock up garage
- European appliances with a 5yr warranty

- Luxury fittings and Vertical window blinds.
 - Feature **1200mm Wide Timber entry door**
 - Driveway, Letterbox & clothesline included
- CALL GREG TODAY**
Ph. 0404 477 751
E. greg.farmer@ntqh.com.au

