

# HOUSE & LAND PACKAGE

## \$486,993 - GRIFFIN POCKET



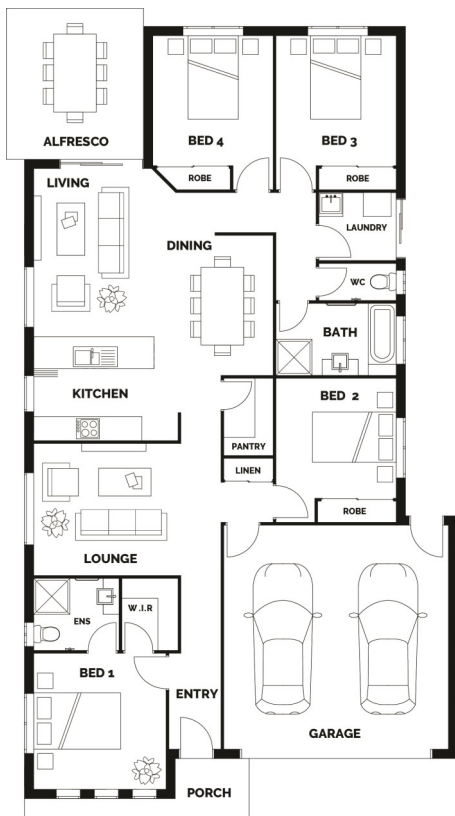
### AVALON 196

Lot 68 Shoreview Boulevard

GRIFFIN - GRIFFIN POCKET

Land size - 375m<sup>2</sup> House Dimensions - 10.8m x 20m

 4 | 
  2 | 
  2



#### Turnkey House Includes:

- H1 Soil Allowance
- Stone Benchtops to kitchen and bathroom
- Stainless Steel Appliances
- LED Downlights Throughout
- Ceiling Fans to bedrooms
- Carpets & Tiles or Timber Look Vinyl Flooring
- Semi Frameless Shower Screens
- Driveway, Letterbox & Clothes-line
- Exposed Aggregate Porch and Alfresco
- Colorbond Roof
- Full NBN Provisions
- Personalised Colour Consultation

PLEASE NOTE: There are some features on our House Picture that are at an extra cost. Please note: this does not include piercing, retaining or fencing

FLOOR AREA	
Living	141.24m <sup>2</sup>
Garage	34.29m <sup>2</sup>
Alfresco	12.89m <sup>2</sup>
Porch	8.28m <sup>2</sup>
<b>Total</b>	<b>196.67m<sup>2</sup></b>

