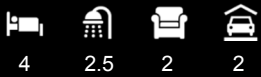


# COMPLETE TURNKEY HOUSE AND LAND PACKAGE

LUXURY INCLUSIONS  
\$589,000\*



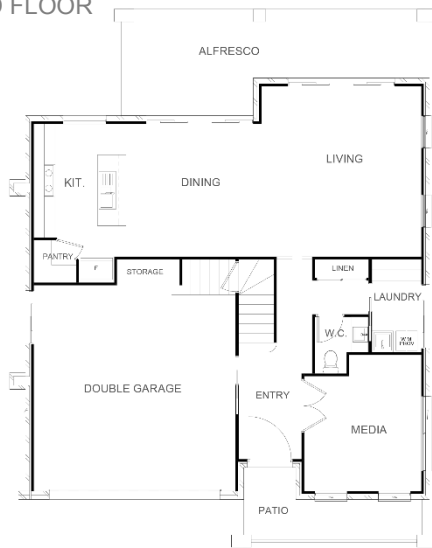
Executive Facade



## ALEXANDRIA 245

Lot Number: 119  
Size: 411  
Estate: GRIFFIN POCKET

### GROUND FLOOR



#### Home Dimensions

Home Width	12.03m
Home Length	15.15m
Living Ground	88.38m <sup>2</sup>
Living First Floor	99.50m <sup>2</sup>
Garage	37.16m <sup>2</sup>
Patio	8.57m <sup>2</sup>
Alfresco	20.75m <sup>2</sup>
<b>Total Area</b>	<b>254.36m<sup>2</sup></b>

### FIRST FLOOR



#### Included in your New Home!

- Air-conditioning and ceiling fans
- Designer kitchen appliances
- Carpet and floor tiles throughout
- Flyscreens and window locks to all openable windows
- Blinds throughout
- Driveway, patio and alfresco
- Letterbox, clothesline and TV antenna
- Contemporary landscaping
- Fixed price site costs and connections\*
- Estate covenants and local requirements
- And much, much more!

To find out more about this house and land package call **PAMELA ROSS 0402 247 167**

**PANTHA**  
Homes

ABN 30 169 880 871 | QBCC 1280374

PANTHAHOMES.COM.AU | (07) 3889 7007

\* Please note - Land is subject to availability at the time of purchase and is not in the control of the builder. House and Land packages consist of the land component and a house component which are sold separately. Pantha Homes is responsible for the sale of the house only. A buyer wishing to purchase a house and land package will need to enter into a Land Contract with a developer or Real Estate Agent and a separate contract (Residential Building Contract) with Pantha Homes for the construction of the house. Exclusions and additional costs may be applicable as the construction requirements are subject to a site classification report, engineering, certifier and covenant review (where applicable) and final client selections. QBCC No 1280374. Photographs and illustrations are for illustrative purposes. Pricing based on LUXURY Inclusions. F&OF